

3D CAD Plant Design

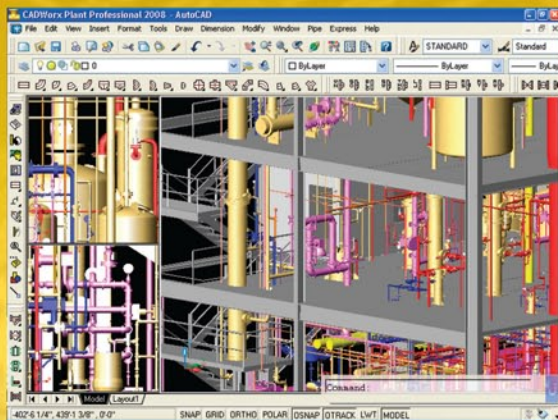
This is the first of a six part series presented by IOCS Asia Pte.Ltd.

This series will cover the areas of process plant design and plant engineering analysis. The word "plant" means many things to many people, but here we define a plant as a large or small facility in which fluids pass through various processes to produce a desired outcome or product, e.g. electrical power or gasoline. These facilities may include plants for petrochemical, offshore, power generation, water treatment, marine systems, food, beverage etc. They may also contain hundreds of thousands of components such as piping, steel, pressure vessels, heat exchangers, compressors, pumps etc.

IOCS is a globally recognized supplier and integrator of world class products that deliver the efficiencies, quality of design and accuracy of deliverables to ensure projects are delivered on time and below budget.

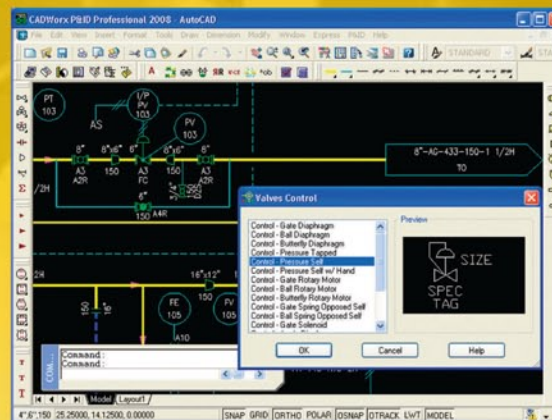
The last few years have seen an explosion of capabilities in the plant design world. Capabilities that just 20 years ago seemed state-of-the-art, demanding costly software solutions running on mainframes, have been eclipsed by powerful solutions that now run on PC's. One such AutoCAD-based solution for physical plant design and process schematics is **COADE Engineering Software's CADWorx Plant Design Suite**, which is easy to use, employs open standards and is scalable for any project size.

Because plant design is a multi-disciplined and iterative process, it places a premium on interaction between the various engineering and design disciplines involved. This is where selecting tools designed for interoperability can make an enormous difference in the successful completion of any project. COADE's focus is on delivering true interoperability between design and engineering analysis, saving clients hundreds of thousands of dollars by reducing project man-hours and producing projects that are delivered on schedule and below budget.



CADWorx Plant

- 3D Plant Design and 2D Layout
 - Structural Steel
 - Equipment
 - Ducting/Cable Trays
 - Automatic Isometrics
 - Piping Specifications
 - Bills of Material
 - Export to External Database
 - Bi-directional Links to Stress Analysis
 - Automated Stress Isometrics
 - Clash Detection *
 - Live Data Base Links *
 - CADWorx Equipment *
 - Personal ISOGEN *
 - Model Review and Walkthrough *
 - CADWorx Steel Professional *
- * Included with CADWorx Plant Professional



CADWorx P&ID

- Intelligent Process Diagrams
 - Industry standard symbols
 - Specification checking
 - Legacy drawing conversion
 - User-defined Project Databases *
 - Bi-directional Database Links *
 - Project Document Links *
 - CADWorx Loops *
 - CADWorx IP (Internet Publisher®) *
- * Included with CADWorx P&ID Professional

CADWorx Datasheets

- Instrument and Equipment Datasheets

PLANT DESIGN SUITE

Easy Open Scalable

CADWorx®

Why is CADWorx one of the fastest growing AutoCAD®-based plant design suites on the market?

Because it has all the tools to produce intelligent plant designs, including:

- Piping
- Steel
- Cable trays/ducting
- Collision detection
- Equipment
- Bills of material
- Isometrics
- Flow schematics
- Instrument loop diagrams
- Bi-directional links to analysis programs
- Walkthrough and visualization



CADWorx delivers!



Plant Focused.
Industry Driven.™

©2007 COADE, Inc. Autodesk, the Autodesk logo, and AutoCAD are registered trademarks of Autodesk, Inc.



Singapore . Malaysia . Thailand . Indonesia . Vietnam . Brunei . Philippines

71 Ayer Rajah Crescent, #05-25, Singapore 139951 Tel: +65 6779 5122 Fax: +65 6778 9200 sales@iocasia.com www.iocasia.com