

PVElite[®] VESSEL & EXCHANGER ANALYSIS



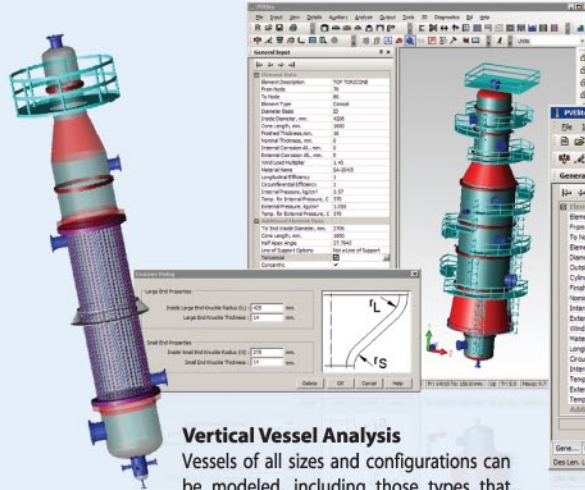
Easy.Accurate.Reliable

IN this series about Professional Engineering Software we have discussed plant design, especially piping, and last month, the important issue of pipe stress analysis. Other key physical components in plant projects are the pressure vessels and the tanks. Both must be designed and built to international design codes; designs must be analysed for code compliance and submitted to an approving organisation.

For vessels the world-wide applicable codes include EN13445, ASME BPV Section VIII, Divisions 1 & 2, PD5500 and various WRC bulletins. Also there are many regional building codes that define the magnitude and application of wind and earth-

quake loads. Another requisite is that the solution is updated as the design codes are modified. A package that covers this scenario is **PVElite** from COADE:

PVElite is a complete solution for the quick and comprehensive design of new pressure vessels for the process industry. PVElite also evaluates and re-rates existing vessels including Fitness for Service analysis. The program considers the whole vessel, addressing all of the wall thickness rules and stress analysis requirements for vertical towers, horizontal vessels and heat exchangers. Or, individual pressure vessel components may be modeled and evaluated according to current safety codes.



Vertical Vessel Analysis

Vessels of all sizes and configurations can be modeled, including those types that have intermediate skirts.

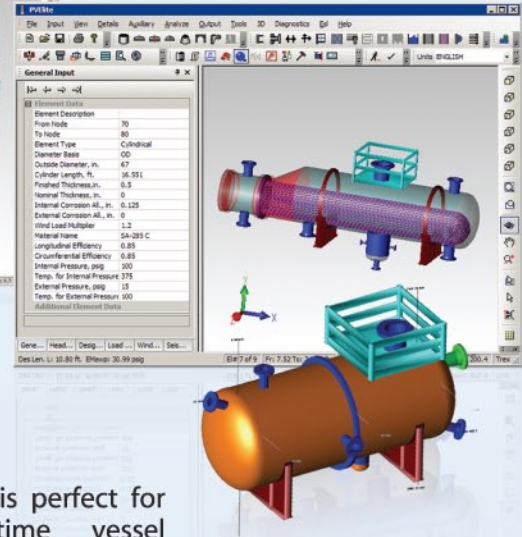
PVElite provides engineers, designers, estimators, fabricators and inspectors around the world with solutions that match their pressure vessel design requirements. Because the program is easy to learn

and use, it is perfect for both full-time vessel designers and for those occasional users who require quick start up and confidence in their safety code calculations.

Whether it's a simple component check or a

Heat Exchanger Analysis

PVElite can model and analysis a variety of heat exchangers, vertical or horizontal.



complete vessel design, **PVElite's** input, analysis and output have been designed to be clear, accurate and concise.

TANK[™] STORAGE TANK DESIGN ANALYSIS & EVALUATION



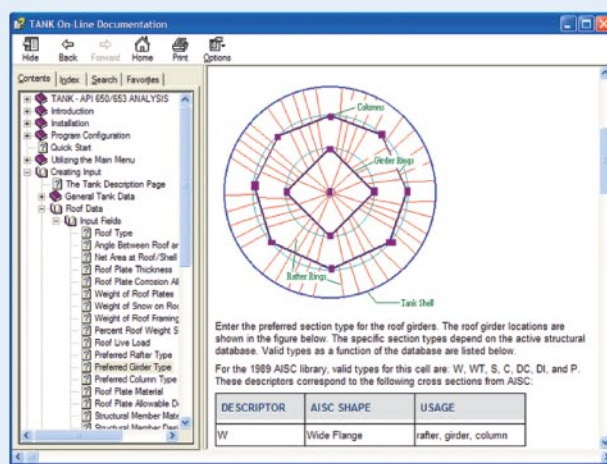
Easy.Accurate.Reliable

Tanks also require rigorous design and analysis to meet design code standards. For tanks, the relevant codes are API 650 & 653.

The COADE solution,



called **TANK**, incorporates full analysis and design capabilities for all structural and material requirements to API 650 10th Edition, Addendum 3 and



The help system includes API code references for easy verification and is organized hierarchically with a built-in search feature for rapid navigation.

API 653 3rd Edition, Addendum 1.

TANK makes the analysis and evaluation of oil storage tanks easy and intuitive. The menu-driven interface makes analysis a breeze and its context sensitive help means that you get help when you need it.

TANK provides accurate analysis results and useful cost evaluation. You can be sure that your chosen tank configuration is designed to code and as efficient as possible.

The program's strategic updates with key enhancements have given its users

the confidence that **TANK** will deliver superior results every time.

Other **COADE** products include:

- CADWorx
- CAESAR II
- CodeCalc

www.coade.com

Visit www.iocsasia.com for the 1st and 2nd advertorial on CADWorx and CAESAR II.

Contact IOCS Asia Pte Ltd to find out how you can improve your design engineering efficiency.



Providing Professional Engineering Solutions in SE Asia since 1978



Singapore . Malaysia . Thailand . Indonesia . Vietnam . Brunei . Philippines

71 Ayer Rajah Crescent, #05-25, Singapore 139951 Tel: +65 6779 5122 Fax: +65 6778 9200 sales@iocsasia.com www.iocsasia.com